



GILLESPIES

KING'S ROAD PARK
GASHOLDER NO.7 REINTERPRETATION STRATEGY

CONTENTS

CURRENT ILLUSTRATIVE MASTERPLAN	3
INTRODUCTION	4
INVENTORY OF AVAILABLE ELEMENTS	5
STRUCTURAL ELEMENT TYPE & LOCATION OPTIONS	6
COLOUR OPTIONS	7
TOTEM - A BEACON - A MEETING POINT	8
TOTEM - THE SQUARE CLOCK - A MEETING POINT	9
TRUSS - BRIDGE BALUSTRADE	10
CAPITAL BLOCKS - ENTRY PLAZA FURNITURE	11
CAPITAL BLOCKS - GROW GARDEN STORAGE	14
ROLLERS - PLAY INTERPRETATION	15



KING'S ROAD PARK

CURRENT ILLUSTRATIVE MASTERPLAN



- Key
- 1. Key Gateway entry
 - 2. B1 Marketing Suite
 - 3. Sands End Lane - Vehicle route
 - 4. Sands End Square - Flexible space
 - 5. Garden Quarter pedestrian lane
 - 6. Phase 1 Podium Courtyard
 - 7. Play hub
 - 8. Flexible lawn space
 - 9. Grade II* Gasholder No.2
 - 10. Grade II Listed buildings
 - 11. Relocated war memorial

INTRODUCTION

GASHOLDER NO. 7 REINTERPRETATION

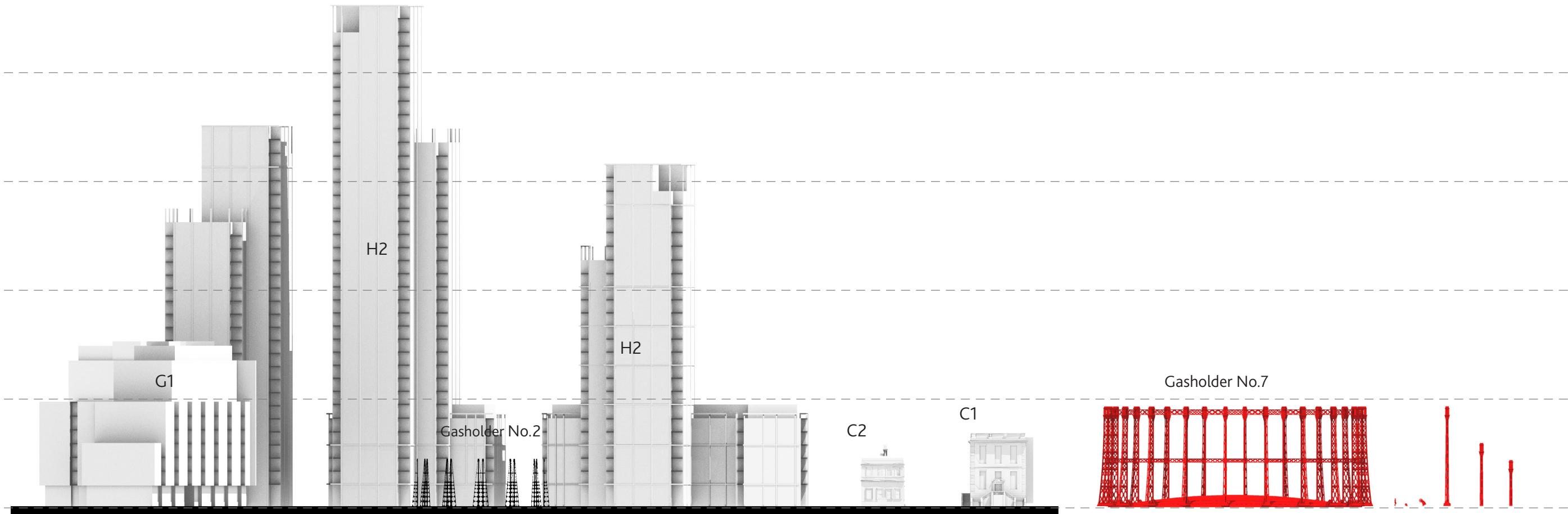
The following document should be read in conjunction with the Montagu Evans report dated September 2017.

This document includes an evolution of the concept design ideas for re-use of Gasholder No. 7.

The ideas introduced in this report illustrate a refined strategy to ensure gasholder elements are appreciated at the human scale. The strategy includes solutions for selected elements of the salvaged frame, and how sections of the structure can be re-purposed to integrate into the King's Road Park public realm.

The current conceptual ideas propose to use the following elements:

- Capital blocks
- Upper Column frames
- Roller and Main Roller
- Upper and lower truss beams



Scale comparison of Gasholder 7 in relation to King's Road Park masterplan massing

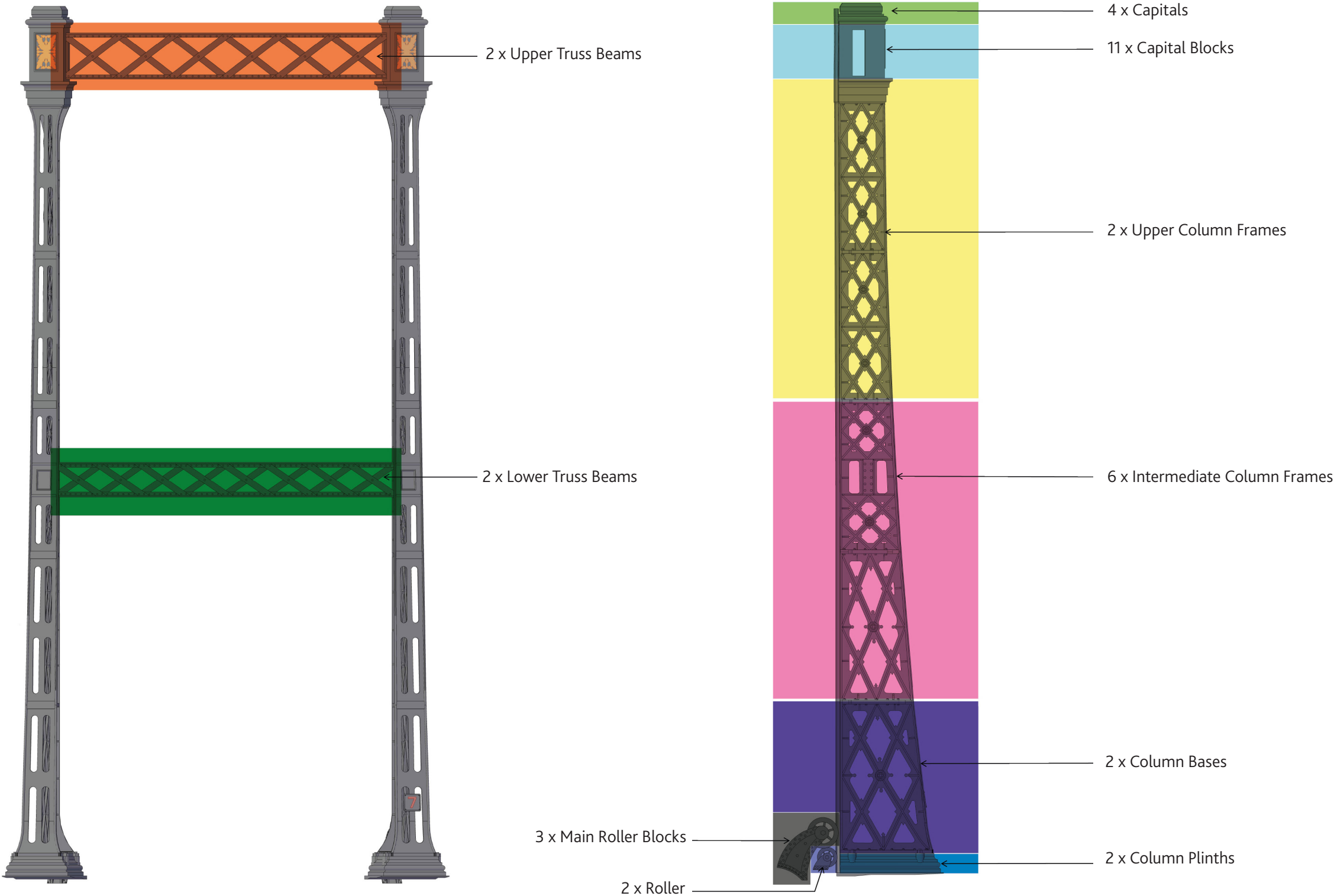
GASHOLDER NO. 7 REINTERPRETATION

INVENTORY OF AVAILABLE ELEMENTS

The Gasholder No. 7 elements have been salvaged and stored following advice in the Montagu Evans report dated September 2017. The adjacent inventory diagram quantifies the number of structural elements available for reuse.

The updated concepts for reinterpretation included a review and scale testing of all available parts to ensure the individual and combined selections are appropriate for the masterplan and considers the following objectives:

- Provide an iconic human scale to a once substantial structure
- Maintain key site views
- Ensure all access and circulation within the public realm is legible, inclusive and does not obstruct.
- Ensure minimal shading to the public realm or adjacent buildings
- Complement and not detract from existing built heritage
- Anti-climb
- Ongoing maintenance



GASHOLDER NO. 7 REINTERPRETATION

STRUCTURAL ELEMENT TYPE & LOCATION OPTIONS

The key theme for the landscape interpretation of Gasholder No. 7 structural elements is to re-use and re-purpose this once grand structure. The strategies look to re-imagine these large structural elements at a human and usable public realm scale.

The reuse strategy aims to provide subtle historical reminders throughout Sands End Square and the Park. The Gasholder No.7 elements should provide a modern and functional public realm use for the residents and community to enjoy.

Key

- Capital Blocks - Entry plaza & grow garden furniture reuse
- Totem - Meeting point/Time/Lighting/Sound/Visual Projection
(Carefully located to not block key views to Gasholder No.2)
- Rollers - Play
- /// Truss - Water garden bridge balustrade



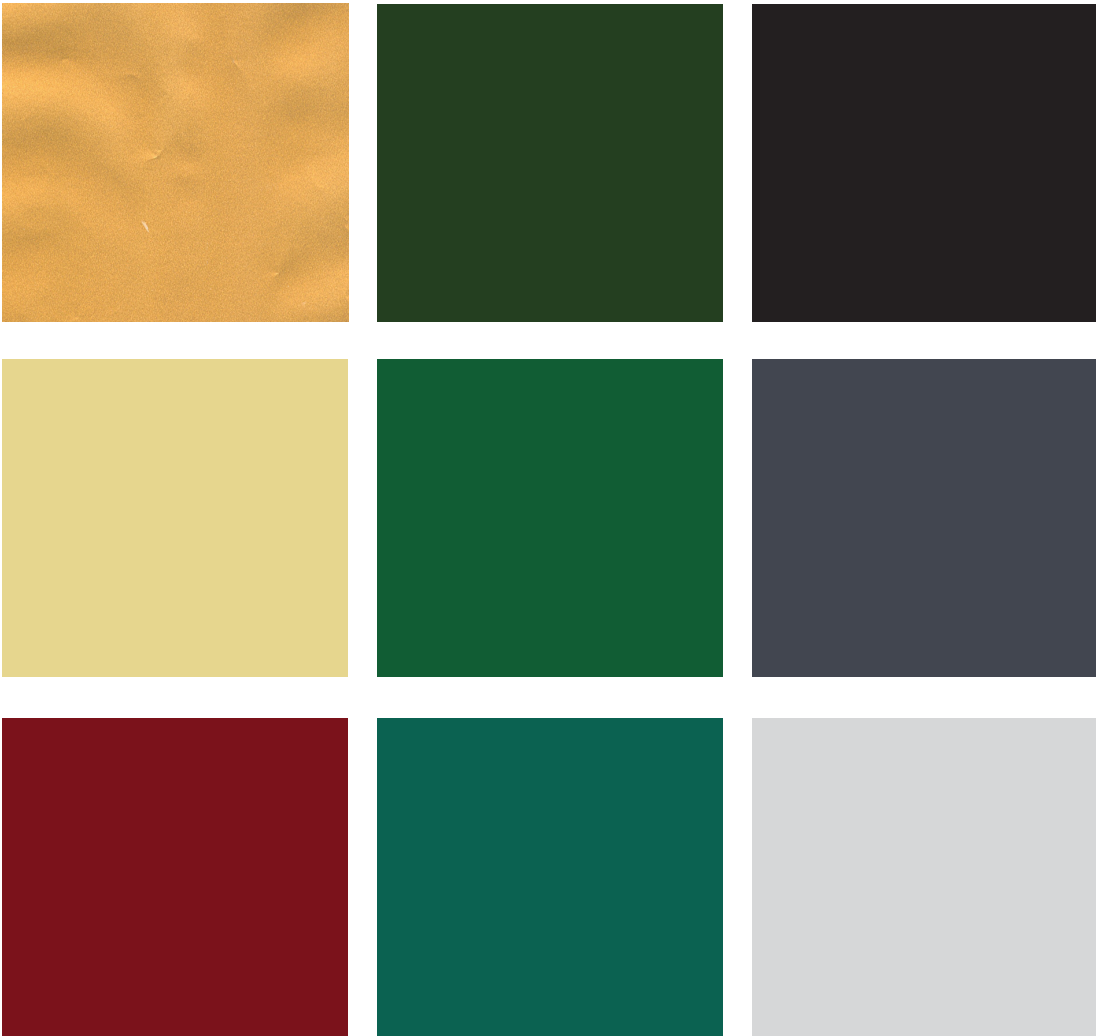
GASHOLDER NO. 7 REINTERPRETATION

COLOUR OPTIONS

Referencing the architectural palette and King’s Road Park branding will assist in colour selection for the salvaged and re-purposed Gasholder No. 7 elements.

The adjacent inspiration colour palette provide greens, golds and metallic finishes, reds, blacks and greys.

For the purposes of illustrating the reuse options, the following landscape interpretation vignettes simply show black and gold elements. This would be tested further during RIBA Stage design development.



Example of Colours chosen to complement the heritage and King’s Road Park Brand



Stratigraphy showing the spectrum of architectural colours once used on Gasholder No.2

GASHOLDER NO. 7 REINTERPRETATION

TOTEM - A BEACON - A MEETING POINT



Opportunity to re-purpose the Upper Column Frame and Capital Block for a lighting beacon, a totem to project sound and visual screenings, a column to include surveillance and a key meeting point and way-finding element.



GASHOLDER NO. 7 REINTERPRETATION

TOTEM - THE SQUARE CLOCK - A MEETING POINT



Opportunity to re-purpose the Upper Column Frame, Capital Block & Main Roller for a time beacon, a key meeting point and way-finding element sitting within Sands End Square aligning with the proposed boulevard trees.

GASHOLDER NO. 7 REINTERPRETATION

TRUSS - BRIDGE BALUSTRADE

The Upper and Lower Truss Beams provide an opportunity for a beautifully engineered bridge form. There are multiple opportunities across the water gardens where these could be celebrated.



GASHOLDER NO. 7 REINTERPRETATION

CAPITAL BLOCKS - ENTRY PLAZA FURNITURE



The Capital Blocks have the potential to be re-purposed with a usable public realm function. There is an opportunity to programme these as a drinking fountain, a key digital way-finding and information sign, a refuse & recycling bin and a post box. It may also include events and water points.

The Capital Blocks, when brought down to a human scale, have the potential to define the Sands End Square plaza and complement the refurbished listed buildings beyond.

GASHOLDER NO. 7 REINTERPRETATION

CAPITAL BLOCKS - ENTRY PLAZA FURNITURE

THE REFUSE (RECYCLING AND GENERAL WASTE)



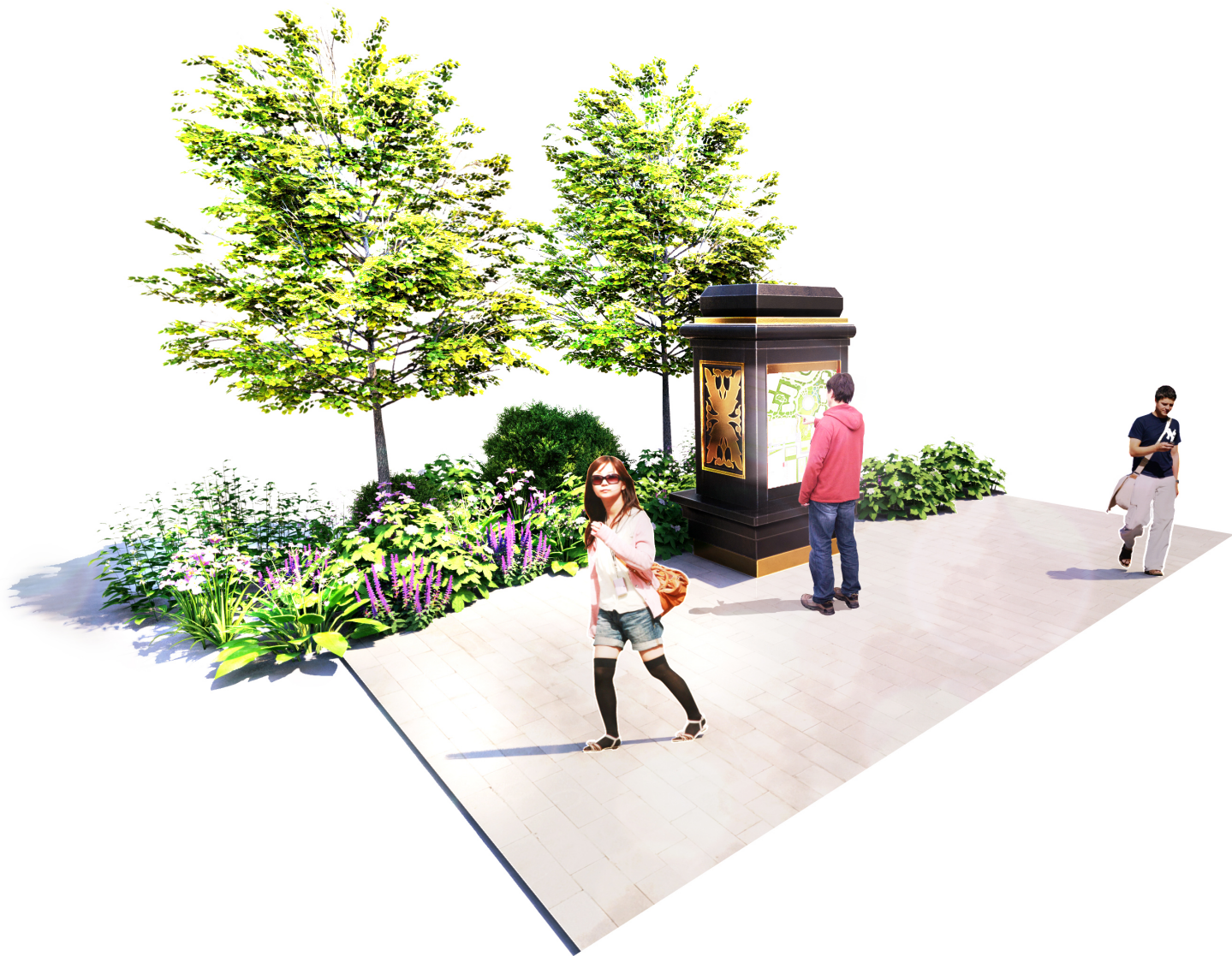
THE FOUNTAIN (DRINK BOTTLE REFILL)



GASHOLDER NO. 7 REINTERPRETATION

CAPITAL BLOCKS - ENTRY PLAZA FURNITURE

THE SIGN (DIGITAL SCREEN)



THE POST (ROYAL MAIL - POST & PARCEL)



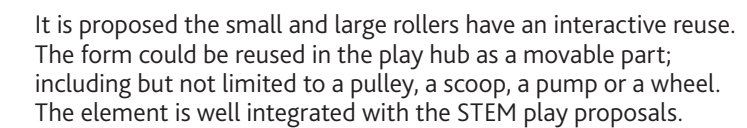
GASHOLDER NO. 7 REINTERPRETATION

CAPITAL BLOCKS - GROW GARDEN STORAGE

THE GARDEN SHED - COMMUNITY STORAGE AND WATER CAN FILL UP



ROLLERS - PLAY INTERPRETATION



The main feature shown illustrated is the roller wheel re-purposed with handles. This could be connected to the misting jets for children to turn on and off.



GASHOLDER NO. 7 REINTERPRETATION

ROLLERS - PLAY INTERPRETATION



The feature shown illustrated is the wheel re-purposed to form a see-saw.



INTENTIONALLY LEFT BLANK

GILLESPIES
1 St John's Square,
London,
ec1m 4dh
United Kingdom

t: +44 (0)20 7253 2929
e: design.london@gillespies.co.uk
w: www.gillespies.co.uk

REVISION NO:	ISSUE DATE:	PREPARED BY:	APPROVED BY:
00	10/06/2020	MP/SC/XD	MP & SR
01	23/06/2020	MP/SC/XD	MP & SR
02	13/04/2021	MP/SC/XD	MP & SR
03	07/07/2021	MP/SC	MP & SR
P11237-00-009	KING'S ROAD PARK 2A 2D		