



revision	date	drawn	description
P02	29.11.19	STM	For Design freeze
P03	20.12.19	STM	Draft Planning issue
P04	03.04.20	LSM	Draft Planning Update
P05	21.10.20	AKE	Draft Planning issue
P06	21.05.21	JLV	Elevation Re-Issue as Modular Scheme
P07	25.05.21	JLV	Minor adjustments to GF
P08	09.06.21	JLV	Design freeze issue
P09	25.06.21	JLV	Planning Issue

S96 Renewed maximum plot parameters
Shoulder height Design Code parameter

Notes: -
Do not scale from drawings unless by agreement with HTA. Use figured dimensions only. Check all dimensions on site prior to commencing the works. Drawing to be read in conjunction with other relevant consultant information.

This drawing is the copyright of HTA Design LLP and must not be copied or reproduced in part, or in whole, without the express permission of HTA Design LLP. Drawing to be read in conjunction with specification.

0m 2m 4m 6m 8m 10m

D2 - Elevation (North)

St William - Berkeley
Fulham Gasworks

PLANNING

W505-HTA-A1-XX-EL-A- 0100-2105
number

1:100 @ A1
scale
HTA Design LLP
www.hta.co.uk
London | Edinburgh | Manchester | Bristol

W505
job reference

P09
revision
CLH
drawn
hta



revision	date	drawn	description
P02	29.11.19	STM	For Design freeze
P03	20.12.19	STM	Draft Planning issue
P04	03.04.20	LSM	Draft Planning Update
P05	21.10.20	AKE	Final Planning update
P06	21.05.21	JLW	Elevation Re-issue as Modular Scheme
P07	25.05.21	JLW	Minor adjustments to GF
P08	09.06.21	JLW	Design freeze issue
P09	25.06.21	JLW	Planning Issue

Notes: -
Do not scale from drawings unless by agreement with HTA. Use
figured dimensions only. Check all dimensions on site prior to
commencing the works. Drawing to be read in conjunction with other
relevant consultant information.

This drawing is the copyright of HTA Design LLP and must not be
copied or reproduced in part, or in whole, without the express
permission of HTA Design LLP. Drawing to be read in conjunction with
specification.

0m 2m 4m 6m 8m 10m



revision	date	drawn	description
P02	29.11.19	STM	For Design freeze
P03	20.12.19	STM	Draft Planning issue
P04	03.04.20	LSM	Draft Planning Update
P05	21.10.20	AKE	Final Planning update
P06	21.05.21	JLV	Elevation Re-Issue as Modular Scheme
P07	25.05.21	JLV	Minor adjustments to GF
P08	09.06.21	JLV	Design freeze issue
P09	25.06.21	JLV	Planning Issue

— S96 Renewed maximum plot parameters
- - - Shoulder height Design Code parameter

Notes: -
Do not scale from drawings unless by agreement with HTA. Use figured dimensions only. Check all dimensions on site prior to commencing the works. Drawing to be read in conjunction with other relevant consultant information.

This drawing is the copyright of HTA Design LLP and must not be copied or reproduced in part, or in whole, without the express permission of HTA Design LLP. Drawing to be read in conjunction with specification.

0m 2m 4m 6m 8m 10m

D2 - Elevation (East)

St William - Berkeley
Fulham Gasworks

PLANNING

W505-HTA-A1-XX-EL-A- 0100-2107
number

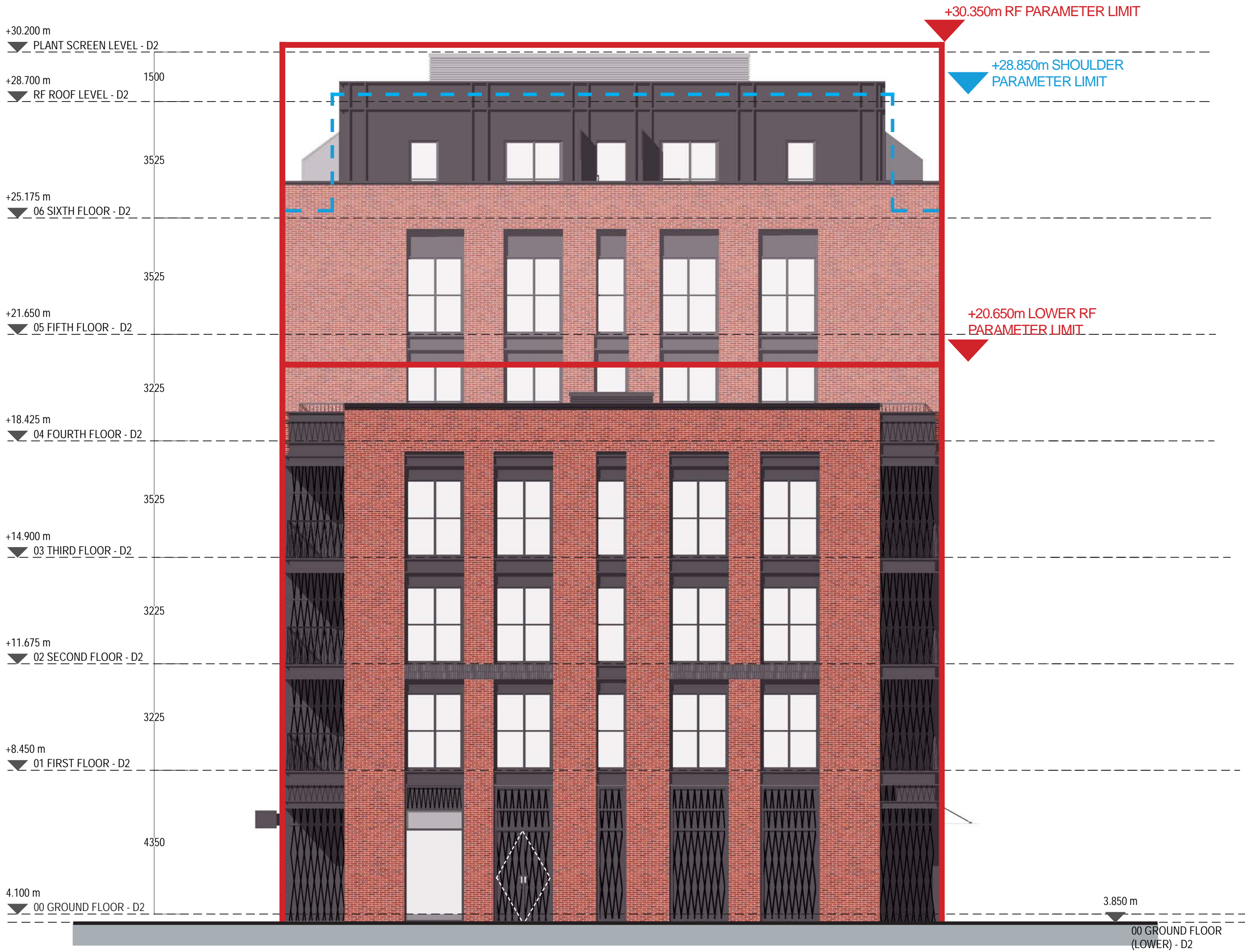
1:100 @ A1
scale
HTA Design LLP
www.hta.co.uk
London | Edinburgh | Manchester | Bristol

W505
job reference

P09
revision

CLH
drawn
hta

revision	date	drawn	description
P02	29.11.19	STM	For Design freeze
P03	20.12.19	STM	Draft Planning issue
P04	03.04.20	LSM	Draft Planning Update
P05	21.10.20	AKE	Final Planning update
P06	21.05.21	JLV	Elevation Re-Issue as Modular Scheme
P07	25.05.21	JLV	Minor adjustments to GF
P08	09.06.21	JLV	Design freeze issue
P09	25.06.21	JLV	Planning Issue



S96 Renewed maximum plot parameters
Shoulder height Design Code parameter

Notes: -
Do not scale from drawings unless by agreement with HTA. Use figured dimensions only. Check all dimensions on site prior to commencing the works. Drawing to be read in conjunction with other relevant consultant information.

This drawing is the copyright of HTA Design LLP and must not be copied or reproduced in part, or in whole, without the express permission of HTA Design LLP. Drawing to be read in conjunction with specification.

0m 2m 4m 6m 8m 10m

D2 - Elevation (West)

St William - Berkeley
Fulham Gasworks

PLANNING

W505-HTA-A1-XX-EL-A- 0100-2108

number

1:100 @ A1
scale

HTA Design LLP
www.hta.co.uk

London | Edinburgh | Manchester | Bristol

W505
job reference

P09

revision

CLH
drawn

hta