

revision	date	drawn	description
P02	29.11.19	STM	For Design freeze
P03	20.12.19	STM	Draft planning issue
P04	03.04.20	STM	Draft planning issue
P05	22.09.20	STM	Draft planning issue
P06	21.10.20	AKE	Final planning issue
P07	24.11.20	AKE	D1 Floor-to-floor update
P08	28.05.21	JLW	Elevation Re-Issue as Modular
P09	25.06.21	JLW	Planning Issue

Key :

- 1 - Red stretcher bond brickwork with red mortar
- 2 - Red stretcher bond brickwork with natural/white mortar
- 3 - Dark stretcher bond brickwork with grey mortar
- 4 - Dark soldier bond brickwork with grey mortar
- 5 - Grey brick quoining

- 6 - Dark profiled expressed metal work
- 7 - Powder coated aluminium windows - Dark grey
- 8 - Powder coated balcony with metal balustrade - Dark Grey
- 9 - Glazing to commercial/ancillary spaces
- 10 - Back painted glazing

- 11 - Bespoke metal detailing
- 12 - Louvred doors
- 13 - Glazed balustrade safety screen
- 14 - Dark metal panels
- 15 - Plant screen

- S96 Renewed maximum plot parameters
- - - Shoulder height Design Code parameter

Notes :-  
Do not scale from drawings unless by agreement with HTA. Use figured dimensions only. Check all dimensions on site prior to commencing the works. Drawing to be read in conjunction with other relevant consultant information.

This drawing is the copyright of HTA Design LLP and must not be copied or reproduced in part, or in whole, without the express permission of HTA Design LLP. Drawing to be read in conjunction with specification.

0m 2m 4m 6m 8m 10m

### D1 - Elevation (North)

St William - Berkeley  
Fulham Gasworks

PLANNING

W505-HTA-A2-XX-EL-A- 0100-2101  
number

1:100 @ A1  
scale  
HTA Design LLP  
www.hta.co.uk

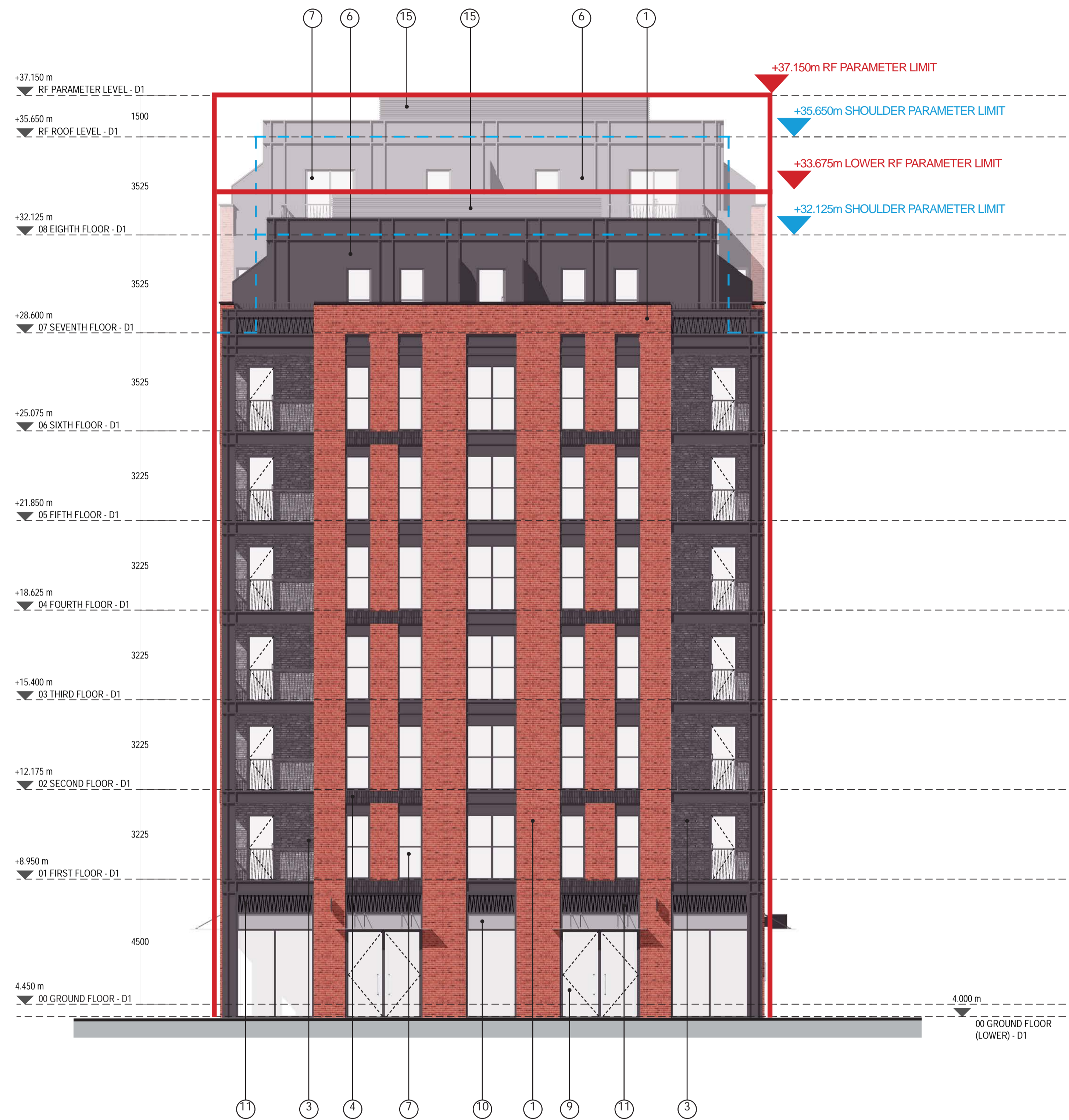
W505  
job reference

London | Edinburgh | Manchester | Bristol

P09  
revision

CLH  
drawn





revision	date	drawn	description
P02	29.11.19	STM	For Design freeze
P03	20.12.19	STM	Draft Planning issue
P04	03.04.20	STM	Draft Planning issue
P05	22.09.20	STM	Draft Planning issue
P06	21.10.20	AKE	Final Planning update
P07	24.11.20	AKE	D1 Floor to Floor update
P08	28.05.21	JLW	Elevation Re-Issue as Modular
P09	25.06.21	JLW	Planning Issue

Key :

- 1 - Red stretcher bond brickwork with red mortar
- 2 - Red stretcher bond brickwork with natural/white mortar
- 3 - Dark stretcher bond brickwork with grey mortar
- 4 - Dark soldier bond brickwork with grey mortar
- 5 - Grey brick quoining

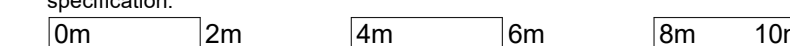
- 6 - Dark profiled expressed metal work
- 7 - Powder coated aluminium windows - Dark grey
- 8 - Powder coated balcony with metal balustrade - Dark Grey
- 9 - Glazing to commercial/ancillary spaces
- 10 - Back painted glazing

- 11 - Bespoke metal detailing
- 12 - Louvred doors
- 13 - Glazed balustrade safety screen
- 14 - Dark metal panels
- 15 - Plant screen

- S96 Renewed maximum plot parameters
- - - Shoulder height Design Code parameter

Notes :-  
Do not scale from drawings unless by agreement with HTA. Use figured dimensions only. Check all dimensions on site prior to commencing the works. Drawing to be read in conjunction with other relevant consultant information.

This drawing is the copyright of HTA Design LLP and must not be copied or reproduced in part, or in whole, without the express permission of HTA Design LLP. Drawing to be read in conjunction with specification.



D1 - Elevation (South)

St William - Berkeley  
Fulham Gasworks

PLANNING

W505-HTA-A2-XX-EL-A- 0100-2102  
number

1:100 @ A1  
scale  
HTA Design LLP  
www.hta.co.uk  
London | Edinburgh | Manchester | Bristol

W505  
job reference

P09  
revision

CLH  
drawn





revision	date	drawn	description
P02	29.11.19	STM	For Design freeze
P03	20.12.19	STM	Draft Planning issue
P04	03.04.20	STM	Draft Planning issue
P05	22.09.20	STM	Draft Planning issue
P06	21.10.20	AKE	Final Planning update
P07	24.11.20	AKE	D1 Floor to Floor update
P08	28.05.21	JLW	Elevation Re-Issue as Modular
P09	25.06.21	JLW	Modular Planning Issue

Key :

- 1 - Red stretcher bond brickwork with red mortar
- 2 - Red stretcher bond brickwork with natural/white mortar
- 3 - Dark stretcher bond brickwork with grey mortar
- 4 - Dark soldier bond brickwork with grey mortar
- 5 - Grey brick quoining

- 6 - Dark profiled expressed metal work
- 7 - Powder coated aluminium windows - Dark grey
- 8 - Powder coated balcony with metal balustrade - Dark Grey
- 9 - Glazing to commercial/ancillary spaces
- 10 - Back painted glazing

- 11 - Bespoke metal detailing
- 12 - Louvred doors
- 13 - Glazed balustrade safety screen
- 14 - Dark metal panels
- 15 - Plant screen

- S96 Renewed maximum plot parameters
- - - Shoulder height Design Code parameter

Notes :-  
Do not scale from drawings unless by agreement with HTA. Use figured dimensions only. Check all dimensions on site prior to commencing the works. Drawing to be read in conjunction with other relevant consultant information.

This drawing is the copyright of HTA Design LLP and must not be copied or reproduced in part, or in whole, without the express permission of HTA Design LLP. Drawing to be read in conjunction with specification.

0m 2m 4m 6m 8m 10m

D1 - Elevation (East)

St William - Berkeley  
Fulham Gasworks

PLANNING

W505-HTA-A2-XX-EL-A- 0100-2103  
number

1:100 @ A1  
scale  
HTA Design LLP  
www.hta.co.uk

W505  
job reference

P09  
revision

CLH  
drawn

hta

London | Edinburgh | Manchester | Bristol



revision	date	drawn	description
P02	29.11.19	STM	For Design freeze
P03	20.12.19	STM	Draft Planning issue
P04	03.04.20	STM	Draft Planning issue
P05	22.09.20	STM	Draft Planning issue
P06	21.10.20	AKE	Final Planning update
P07	24.11.20	AKE	D1 Floor to Floor update
P08	28.05.21	JLW	Elevation Re-Issue as Modular
P09	25.06.21	JLW	Planning Issue

Key :

- 1 - Red stretcher bond brickwork with red mortar
- 2 - Red stretcher bond brickwork with natural/white mortar
- 3 - Dark stretcher bond brickwork with grey mortar
- 4 - Dark soldier bond brickwork with grey mortar
- 5 - Grey brick quoining

- 6 - Dark profiled expressed metal work
- 7 - Powder coated aluminium windows - Dark grey
- 8 - Powder coated balcony with metal balustrade - Dark Grey
- 9 - Glazing to commercial/ancillary spaces
- 10 - Back painted glazing

- 11 - Bespoke metal detailing
- 12 - Louvred doors
- 13 - Glazed balustrade safety screen
- 14 - Dark metal panels
- 15 - Plant screen

- S96 Renewed maximum plot parameters
- - - Shoulder height Design Code parameter

Notes :-  
 Do not scale from drawings unless by agreement with HTA. Use figured dimensions only. Check all dimensions on site prior to commencing the works. Drawing to be read in conjunction with other relevant consultant information.  
 This drawing is the copyright of HTA Design LLP and must not be copied or reproduced in part, or in whole, without the express permission of HTA Design LLP. Drawing to be read in conjunction with specification.  
 0m 2m 4m 6m 8m 10m

**D1 - Elevation (West)**  
 St William - Berkeley  
 Fulham Gasworks  
**PLANNING**

W505-HTA-A2-XX-EL-A- 0100-2104  
 number  
 1:100 @ A1  
 scale  
 HTA Design LLP  
 www.hta.co.uk  
 London | Edinburgh | Manchester | Bristol

**P09**  
 revision  
 CLH  
 draw